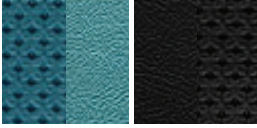


introducing the  
**1967 Fairlane 500XL/GT Touring II Front Bucket Seats**

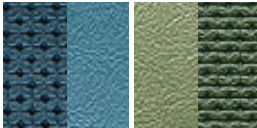
1967 Fairlane 500XL/GT Standard Colors

AQUA L-2929 with  
INSERT L-2951



BLACK L-958 with  
INSERT L-2949

BLUE L-2287 with  
INSERT L-2946



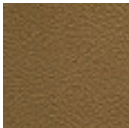
IVY GOLD L-2503 with  
INSERT L-2947

PARCHMENT L-3096



RED L-2920 with  
INSERT L-2954

SADDLE L-3099



\*1967 Fairlane 500XL/GT Standard Interior with Ivy Gold L-2503 and Ivy Gold L-2947 Rosette inserts shown.

**Part Number:** 100290

**MSRP:** \$1,500

(Manufacturer's Suggested Retail Price)

**Application:** 1967 Ford Fairlane 500XL/GT.

**Description:** Distinctive Industries 1967 Fairlane 500XL and GT Touring II seat upholstery is assembled using high quality, restoration grade Sierra grain vinyl with Rosette grain inserts, just like the original and is patterned to mimic the original design.



- **Color matched to Distinctive Industries' interior products**
- **Mimics the original interior design**
  - **20 reclining positions**
- **Seat frame designed to support high bolstered foam**
  - **18 seating track positions**
- **TIG welded and electrostatically coated frame and seat tracks**
  - **2 year limited warranty**

*Did we mention it matches the original interior!*

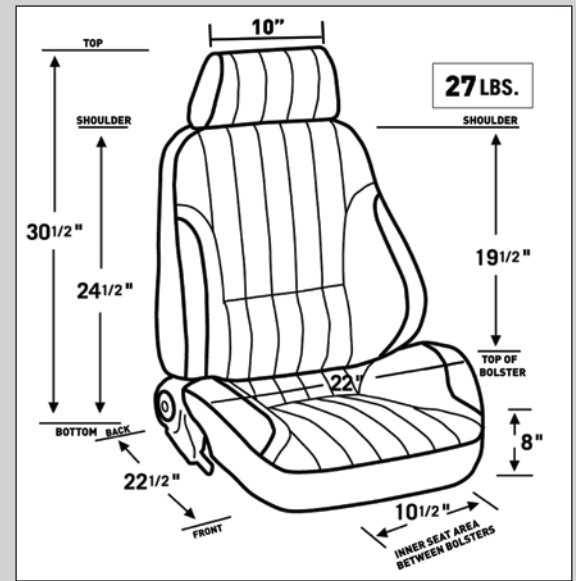
See page 2 for full product details and specifications →

The Distinctive Industries Touring II seat is manufactured using the proven **Procar® by Scat** seat frame and foam and is covered in high quality, Distinctive Industries restoration upholstery. The steel seat frame is **TIG welded** and **electrostatically coated** for strength and durability. The completed seat offers a **20 position reclining seat back** and includes a **18 position sliding seat track** built into the frame all which adds up to a comfortable and customizable seating position for the occupant.

The Touring II seats are an innovative product in that the seat frame is specifically designed and manufactured for use as a **supportive, bolstered seat** unlike many other currently offered seat's that are simply bolstered using nothing more than a bolstered foam which will eventually break down and separate. The support, detail and value that the Touring II seat offers is simply unmatched by any other seat!

The Distinctive Industries Touring II seats have been painstakingly patterned to very closely **mimic the original upholstery's design** and details for a seat compliments your existing original interior while the **20 position reclining seat back** is a real solution to a problem that has existed with the original seats for decades.

The **Distinctive Industries Touring II Fairlane** seat is a drop in option for both restoration oriented and Resto-mod themed vehicles and have the added value of matching the rest of the Distinctive Industries interior product line.



### Attention to Detail

Don't worry, seats are color matched to all Distinctive Industries' products and mimic the original interior design.



### Comfort & Support

Procar® by Scat seat frames are designed to support high bolstered injection molded seat foam, making this the perfect bolstered seat platform. Headrest brackets are already installed in the seat and headrests are included, but not installed.



### Strength & Durability

Procar® by Scat has perfected the manufacturing process. Seat frames and tracks are TIG welded and electrostatically coated for long life and durability.



### Lean Back

Feel free to lean back and get comfortable with 20 reclining seat positions and 18 seat tracking positions. Enjoy the perfect driving position!



*brought to you by*



&



Packaging Details:

**Box Size - 10" H x 22" W x 44" L**

**Weight - 28 lbs**

\*Requires 2 boxes per shipment.

\*\*Mounting Brackets (both model specific and universal kits available from Scat), attaching hardware, and seat buttons/medallions/emblems are not included.